

**STIEBEL ELTRON**

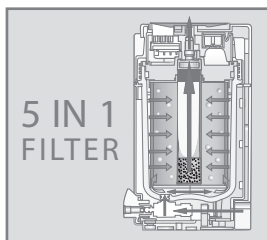
High Quality  
**WATER FILTER**  
by Stibel Eltron / Germany

USER MANUAL | FOUNTAIN WATER FILTER



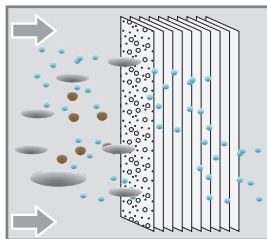
**FOUNTAIN**

## SHORT OVERVIEW. FOUNTAIN FEATURES.



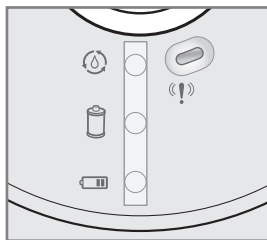
### 5 Stages in 1 filter

The qualities of 5 single filtration stages are combined in 1 cartridge. The high quality filter media allow for an extraordinary clean and safe filter performance.



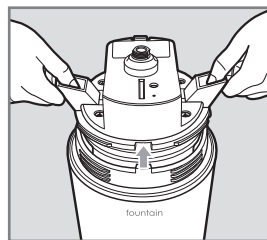
### Ultrafiltration membrane 0.01~ 0.1 micron and anti-bacterial carbon

The membrane with a pore size of 0.01~0.1 micron removes all bacteria and provides microbiologically safe and clean drinking water for you and your family. Anti-bacterial carbon on the membrane prevents the growth of filtered bacteria inside the filter.



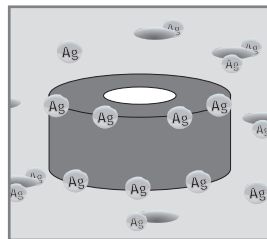
### Display with indicator and beeper

The indicator and beeper alarm will set off, if the filter has to be changed. It is based on flow volume and time.



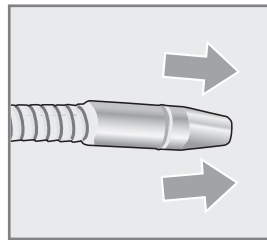
### Filter replacement

The Stiebel Eltron fountain filter cartridge is easy to change. No plumber or expert is needed.



### Anti-bacterial-silverlite

An anti-bacterial silver impregnated mineral stone protects the filter against contamination from the filter outlet.



### One-way nozzle on the flexible pipe

This nozzle at the outlet of the flexible pipe allows a water and airflow only from the in-to the outside direction.

Any contamination from water or air from the pipe outlet is impossible.

---

# USER MANUAL FOUNTAIN.

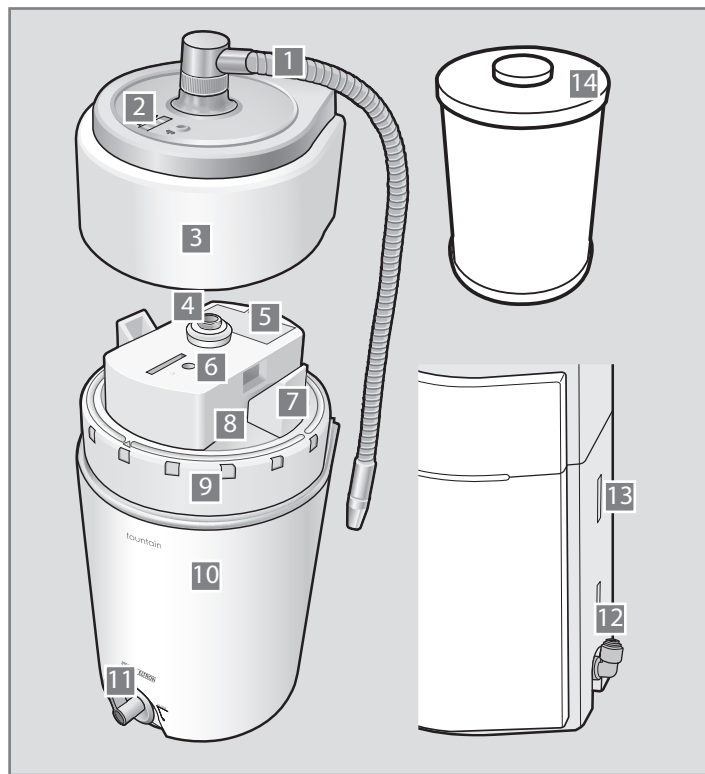
## CONTENT.

---

1. Fountain filter components _____	04
2. Accessories and operating instructions _____	05
3. Filter specifications _____	06
4. Installation and precautions _____	07
5. Installation guidelines _____	08-09
6. Filter replacement _____	10-11
7. Display _____	12
8. Trouble shooting _____	13

# USER MANUAL FOUNTAIN.

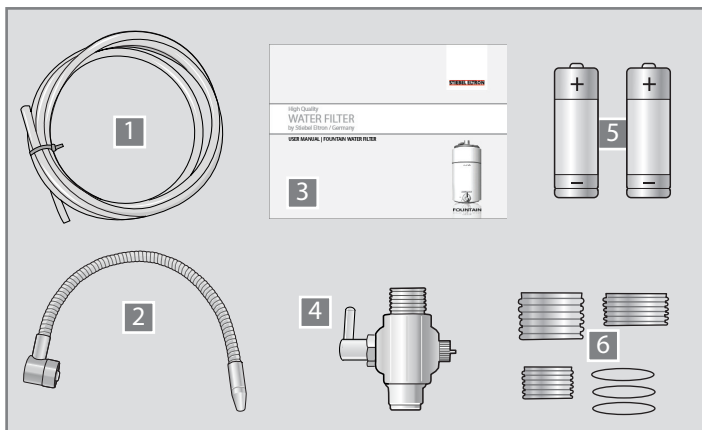
## 1. FOUNTAIN FILTER COMPONENTS.



- 1 Flexible pipe
- 2 Display
- 3 Top cover
- 4 Nipple
- 5 Battery cover
- 6 Reset
- 7 Ejector
- 8 Controller cover
- 9 Filter retaining ring
- 10 Base housing
- 11 Front valve
- 12 One-touch elbow fitting
- 13 Holes for wallmount installation
- 14 5 in 1 filter

# USER MANUAL FOUNTAIN.

## 2. ACCESSORIES AND OPERATING INSTRUCTIONS.

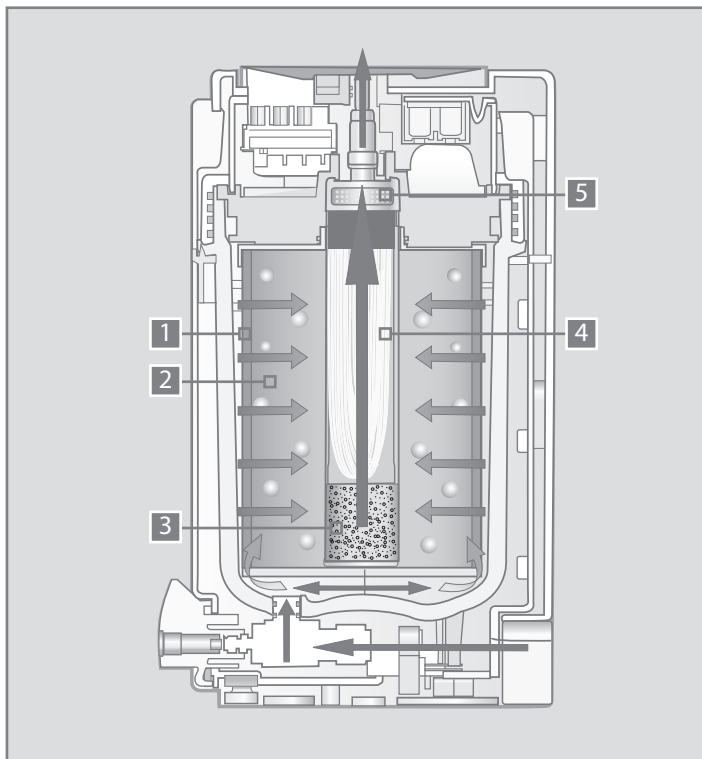


- 1** Plastic tube [1 x 1m]
- 2** Flexible pipe [1 x]
- 3** Manual [1 x]
- 4** Diverter valve with o-ring and cap [1 x]
- 5** Battery AA size [2 x]
- 6** Adapter [3 x], o-ring [3 x]

Model	Water filter
- Type name	Fountain
- Part no.	1511-222303
Characteristics	
- Installation type	countertop, wallmounted
- Filter cartridge	5 in 1 composite filter
- Housing material	ABS [constructed of durable, high impact plastic]
- Max. operating pressure	4 bar
- Min. operating pressure	1 bar
- Max. operating temperature	35 °C
- Min. operating temperature	4 °C
Rated service	
- Rated service flow	2.0 L per minute at 1 bar of water pressure with a new filter. [Actual flow rate will depend on water pressure and the time the filter has been in service.]
- Rated service life*	The filter is designed to serve a family's cooking and drinking water needs for 12 months or 4,320 L, whichever comes first.
*NOTE: The life time will depend on the water quality. It is based on the consumption of 12 L daily.	

# USER MANUAL FOUNTAIN.

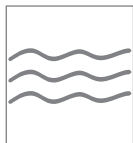
## 3. FILTER SPECIFICATIONS.



Filter step	Removal function
1. Polyethylene sediment filter   5 micron	rust and sediments
2. Activated carbon block   1 micron	chlorine, bad taste and odor
	THMs, VOCs
	Herbicides, pesticides
	heavy metals [mercury, lead, $Cr^{6+}$ , cadmium, selenium, iron, aluminum, zinc]
3. Granular activated carbon [silver impregnated]	chlorine, bad taste and odor
	THMs, VOCs
	prevents growth of filtered bacteria inside the filter
4. Ultrafiltration membrane   hollow fiber pore size 0.01~ 0.1 micron	bacteria
	cysts
5. Antimicrobial silverlite [CaO, SiO <sub>2</sub> , AlO <sub>3</sub> , MgO, MnO and Ag <sup>+</sup> ]	prevents contamination from the outlet

# USER MANUAL FOUNTAIN.

## 4. INSTALLATION AND PRECAUTIONS.



The water filter can only be used with pre-filtered water from a water supply facility. The filter can not be used with water from unsafe water sources such as rivers and wells.



To reach an optimized and satisfying filter result the fountain should only be installed in houses with a pipe pressure between 1 and 4 bar.



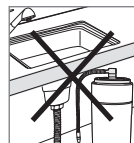
The fountain must be installed in a far distance to inflammable materials and heating sources to avoid deformation.



The fountain should only be installed inside the house.



The filter can only be installed to the cold water supply with a water temperature between 4 and 35°C.



The fountain can only be installed as countertop or wallmounted type by using a diverter valve. It can not be used as under sink type.



The fountain should not be exposed to force or shock.



The fountain must be kept away or protected from direct light (e.g. sunlight).



Do not spill water on the water filter.

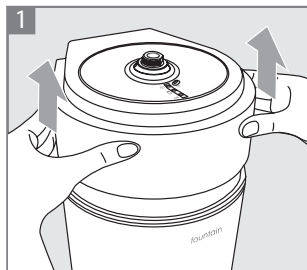


Do not open the filter during water flow.

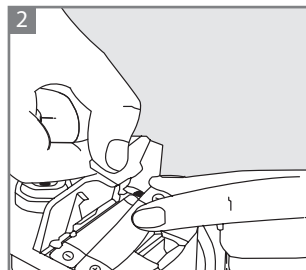
# USER MANUAL FOUNTAIN.

## 5. INSTALLATION GUIDELINES

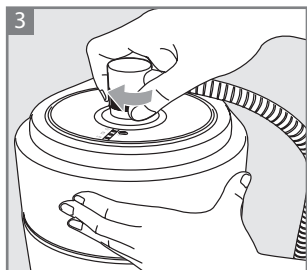
### INSERT THE BATTERIES



To insert the batteries remove the top cover of the filter.

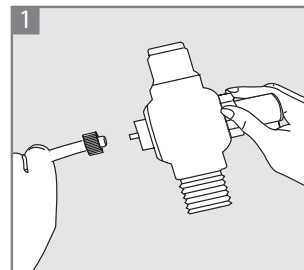


Open the battery cover and insert the batteries.

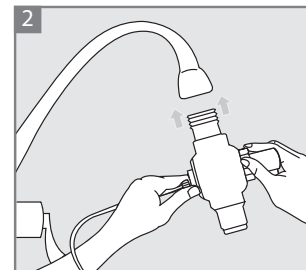


Put the top cover back on the filter and connect the flexible pipe with the nipple on the top.

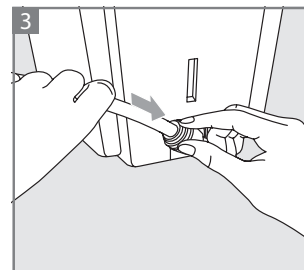
### COUNTERTOP (FAUCET INSTALLATION)



Connect the plastic tube to the diverter valve. Tighten the cap.



Connect the diverter valve to the faucet. If needed use one of the 3 faucet adapters.



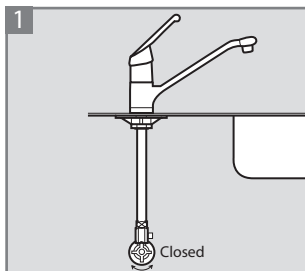
Insert the other end of the tube to the elbow fitting on the back cover until it is locked properly.



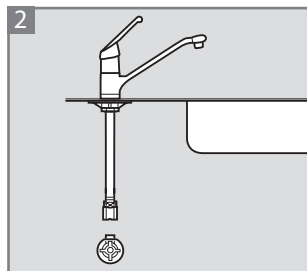
# USER MANUAL FOUNTAIN.

## 5. INSTALLATION GUIDELINES

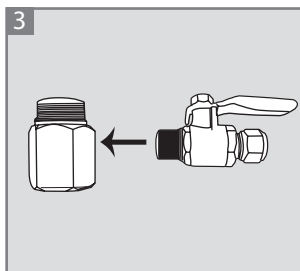
### COUNTERTOP (UNDERSINK CONNECTION)\*



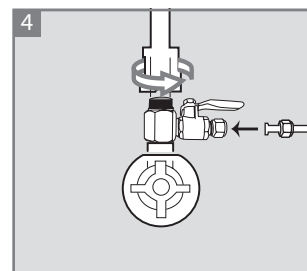
Lock the stop valve of the cold water supply line.



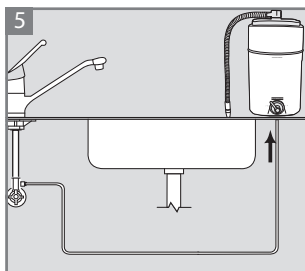
Detach the metal hose from the cold water supply under the sink.



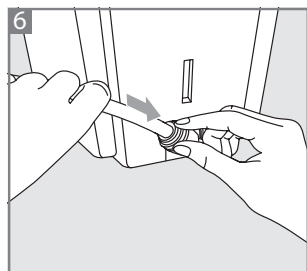
Connect the diverter ball valve with the nipple (use teflon-tape).



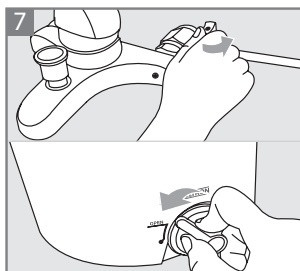
Assemble the ball valve to the water supply. Re-attach the metal hose and connect the inlet tube.



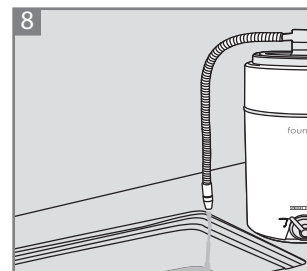
Connect the outlet tube with the fountain. If necessary drill a hole.



Connect the plastic tube to the elbow fitting.



Open the valves and check all connections for a leakage.

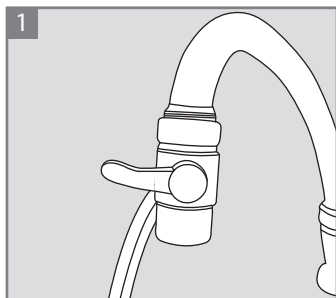


Before using the filtered water as drinking water, let the water flow for at least 10 minutes.

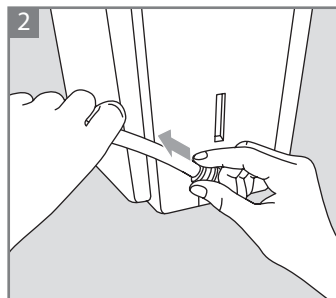
\*Additional accessories are necessary

# USER MANUAL FOUNTAIN.

## 6. FILTER REPLACEMENT.



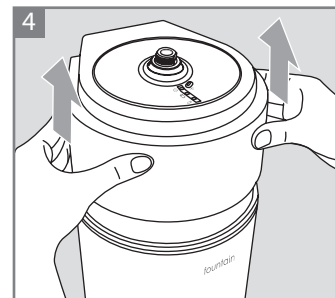
1 Close the diverter valve.



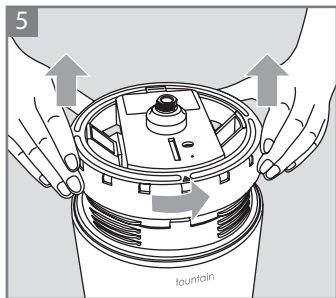
2 Remove the tube by pressing the upper ring on the connector down.\*



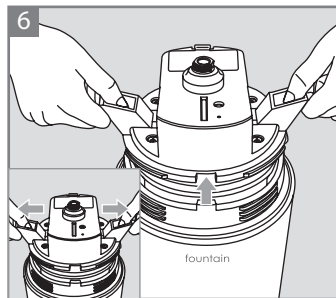
3 Open the front valve and remove the flexible pipe.



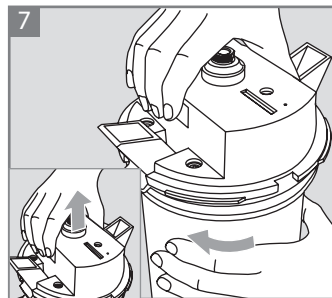
4 Pull out the top cover.



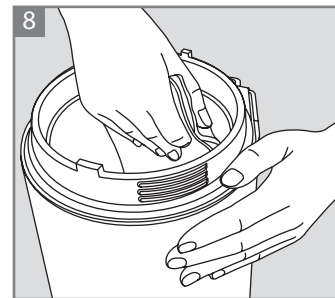
5 Remove the retaining ring to unlock the filter.\*



6 Press the ejectors to remove the filter adapter and filter.\*



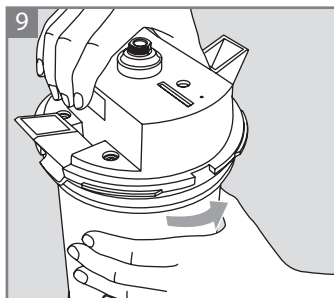
7 Separate the old filter from the adapter.



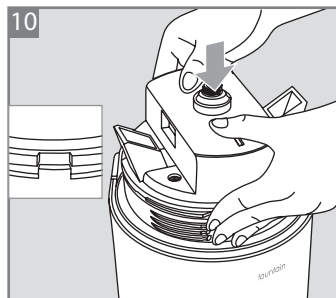
8 Clean the inside of the filter only with a wet or dry cloth.

# USER MANUAL FOUNTAIN.

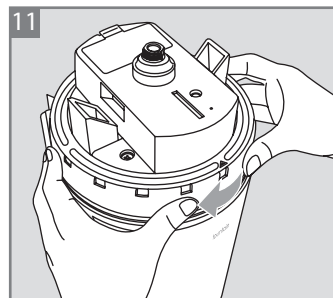
## 6. FILTER REPLACEMENT.



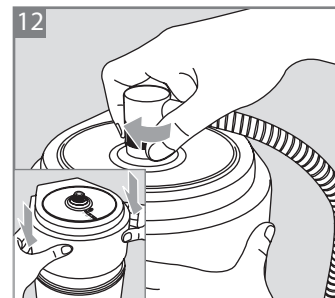
9 Assemble the new filter with the adapter.



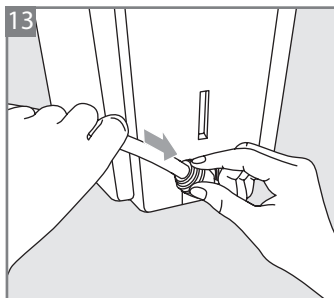
10 Press the assembled filter into the base housing.



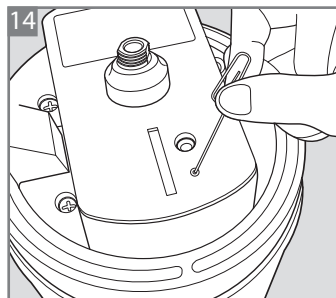
11 Lock the filter retaining ring.



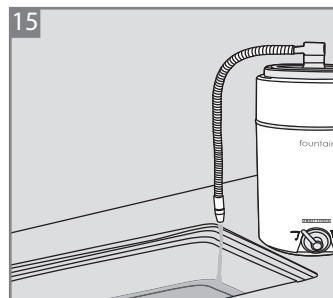
12 Put the top cover on and connect the flexible pipe to the nipple.



13 Connect the plastic tube to the elbow fitting.



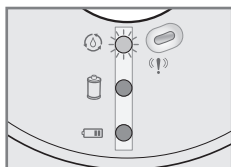
14 Reset the filter indicator (see page 12).



15 Open the diverter and front valve to allow water flow.

# USER MANUAL FOUNTAIN.

## 7. DISPLAY



### Flickering blue lamp

Normal flow.  
1 - 11 month | < 4,000 L.



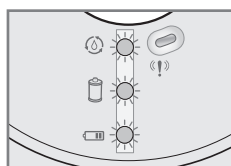
### Flickering yellow lamp and beeping

The batteries have to be changed immediately.



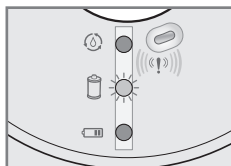
### Flickering red lamp

Filter replacement is needed within 1 month.  
11 month | 4,000 - 4,380 L.



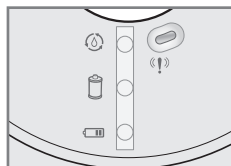
### All lamps flickering

Over-flow, close the valves and check the filter.



### Flickering red lamp and beeping

The filter has to be changed immediately.  
358 days | 4,300 L.



### No lamps and no beeping

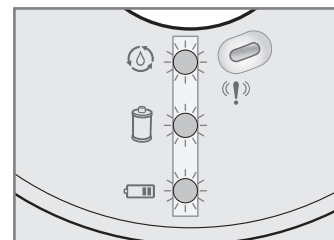
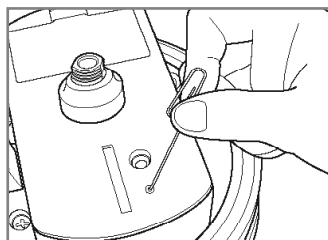
Lifetime of the filter is finished.  
[The filter must not be used anymore]  
12 month | > 4,380 L.

### Indicator reset after filter replacement

After changing the filter cartridge the indicator has to be reset.

Take the top cover off and press the reset button using a clip for two seconds to reset the filter. During reset, the three LEDs light up simultaneously.

Note : It is not required to reset the indicator after replacing batteries. The used water volume remains recorded in the memory.



# USER MANUAL FOUNTAIN.

## 8. TROUBLE SHOOTING.

Problems	Possible cause	Trouble shooting
Black color or black particles in the water.	The fountain water filter contains carbon powder. After installation small particles can occur in the water.	After installation or filter exchange let the water flow for about 10 minutes to clean the filter from possible small residual particles of carbon.
Slow water flow.	The lifetime of the filter is finished.	Replace the filter cartridge.
	The filter is clogged.	Replace the filter cartridge.
Noise in the system.	There are air bubbles in the system.	After installation let the water flow for about 10 minutes to remove all air from the system.
Unusual water or chlorine taste and bad odor.	The cartridge does not remove chlorine and other contaminants from the water. The life time of the filter cartridge is finished.	Replace the filter cartridge.
	You have not used the filter for a while and some sediments and contaminants developed a bad smell in the system.	Open the valves and let the water flow for at least 5 minutes.
Water leakage.	Tubes, fittings, nipples and flexible pipe might not be connected properly.	Check every connection to be inserted in the proper depth.
No water flow.	The diverter valve is closed.	Open the diverter valve.
	The front valve is closed.	Open the front valve.
No light on display.	The filter life time of the filter is reached.	Change the filter.
	Unproper use causes water inside the PCB.	Contact Stiebel Eltron service center: 035-220088