

OPERATION AND INSTALLATION

Hardwired remote control for instantaneous water heaters DHB-E SLi, DHB STi,
HDB-E Si

» FB 1 LCD



STIEBEL ELTRON

OPERATION

1.	General information	2
1.1	Safety instructions	2
1.2	Other symbols in this documentation	2
1.3	Units of measurement	3
2.	Safety	3
2.1	Intended use	3
2.2	General safety instructions	3
3.	Appliance description	3
3.1	Operation	3
4.	Cleaning, care and maintenance	3
5.	Troubleshooting	3

INSTALLATION

6.	Safety	4
6.1	General safety instructions	4
6.2	Instructions, standards and regulations	4
6.3	Relevant documents	4
7.	Appliance description	4
7.1	Standard delivery	4
7.2	Required accessories	4
8.	Installation	4
8.1	Control cable	4
8.2	Converting the instantaneous water heater	4
8.3	Fitting the adaptor assembly	5
8.4	Installation site	5
8.5	Mounting the flush box	5
8.6	Mounting the programming unit	5
9.	Commissioning	6
9.1	Appliance handover	6
10.	Shutting down	6
11.	Recommissioning	6
12.	Troubleshooting	6
13.	Maintenance	6
14.	Specification	6
14.1	Dimensions and connections	6
14.2	Data table	6

GUARANTEE

ENVIRONMENT AND RECYCLING

OPERATION

1. General information

The chapter "Operation" is intended for appliance users and qualified contractors.

The chapter "Installation" is intended for qualified contractors.



Note

Read these instructions carefully before using the appliance. Keep this manual safe.
Pass on the instructions to any new user if required.

1.1 Safety instructions

1.1.1 Structure of safety instructions



KEYWORD Type of risk

Here, possible consequences are listed that may result from failure to observe the safety instructions.

► Steps to prevent the risk are listed.

1.1.2 Symbols, type of risk

Symbol	Type of risk
	Injury
	Electrocution
	Burns (burns, scalding)

1.1.3 Keywords

KEYWORD	Meaning
DANGER	Failure to observe this information will result in serious injury or death.
WARNING	Failure to observe this information may result in serious injury or death.
CAUTION	Failure to observe this information may result in non-serious or minor injury.

1.2 Other symbols in this documentation



Note

General information is identified by the symbol shown on the left.

► Read these texts carefully.

Symbol	Meaning
	Material losses (Appliance and consequential losses, environmental pollution)
	Appliance disposal

- This symbol indicates that you have to do something. The action you need to take is described step by step.

1.3 Units of measurement



Note

All measurements are given in mm unless stated otherwise.

2. Safety

2.1 Intended use

This device is intended to be used with instantaneous water heaters DHB-E SLi, DHB-STi and HDB-E Si.

This appliance is intended for domestic use. It can be used safely by untrained persons. The appliance can also be used in a non-domestic environment, e.g. in a small business, as long as it is used in the same way.

Any other use beyond that described shall be deemed inappropriate. Observation of these instructions and of instructions for any accessories used is also part of the correct use of this appliance.

2.2 General safety instructions



CAUTION Burns

There is a risk of scalding at outlet temperatures in excess of 43 °C.



WARNING Injury

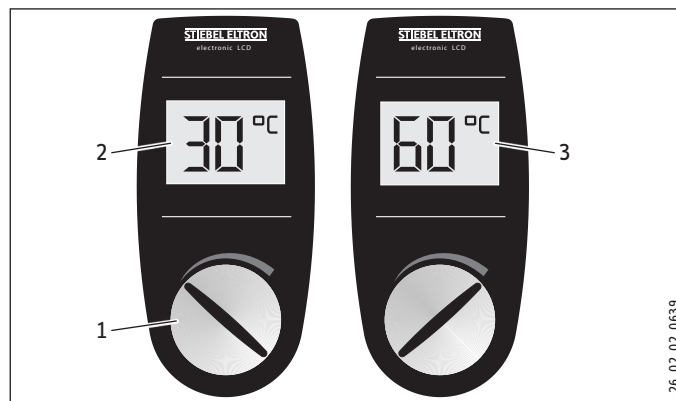
The appliance may be used by children aged 8 and up and persons with reduced physical, sensory or mental capabilities or a lack of experience and know-how provided that they are supervised or they have been instructed on how to use the appliance safely and have understood the resulting risks. Children must never play with the appliance. Children must never clean the appliance or perform user maintenance unless they are supervised.

3. Appliance description

This hardwired remote control enables the user to operate the instantaneous water heater exclusively via the remote control. The data transfer between the hardwired remote control and the instantaneous water heater occurs by means of the integral adapter assembly and a cable.

3.1 Operation

The required DHW outlet temperature of the instantaneous water heater can be selected via the temperature selector on the hardwired remote control.



- 1 Selector
- 2 Setting range minimum
- 3 Setting range maximum

- Turn the temperature selector to the required temperature. At times, the outlet temperature of the instantaneous water heater may differ from the set temperature.



Note

If the outlet temperature is not sufficiently high when the draw-off valve is fully open and the temperature selector is set to maximum, then more water is flowing through the appliance than can be heated by the heating system (appliance is at its output limit).

- Reduce the flow at the draw-off valve, this will allow the system to achieve the required temperature again.

4. Cleaning, care and maintenance

- Never use abrasive or corrosive cleaning agents. A damp cloth is sufficient for cleaning the appliance.

5. Troubleshooting

See chapter "Troubleshooting" in the instantaneous water heater instructions.

INSTALLATION

6. Safety

Only a qualified contractor should carry out installation, commissioning, maintenance and repair of the appliance.

6.1 General safety instructions

We guarantee trouble-free function and operational reliability only if original accessories and spare parts intended for the appliance are used.

6.2 Instructions, standards and regulations



Note

Observe all applicable national and regional regulations and instructions.

6.3 Relevant documents

Operating and installation instructions of the instantaneous water heater

7. Appliance description

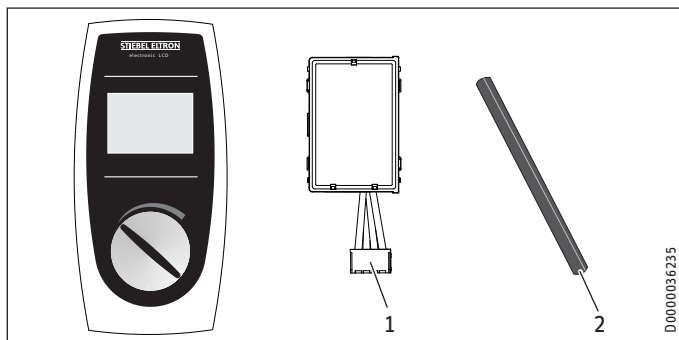
The hardwired remote control is intended for use with instantaneous water heaters. The hardwired remote control enables the user to operate the instantaneous water heater located in a different room, such as the kitchen or bathroom. The hardwired remote control can also be used for instantaneous water heaters mounted on a self-supporting frame.

Install the hardwired remote control exclusively with a flush box, see chapter "Essential accessories".

The hardwired remote control operates with low voltage.

7.1 Standard delivery

The following are part of the standard delivery of the hardwired remote control:



- 1 Adaptor assembly
- 2 Sleeve

7.2 Required accessories

Flush box for accommodating the FB 1 LCD hardwired remote control together with frame, fascia and screws:

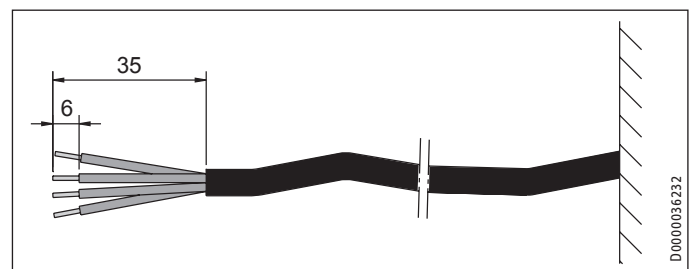
A-Plus (HK) Group Ltd. - 222419c

8. Installation

- Isolate the instantaneous water heater from the power supply.
- For details on opening and closing the instantaneous water heater and on installing the adaptor assembly, see the operating and installation instructions of the instantaneous water heater.

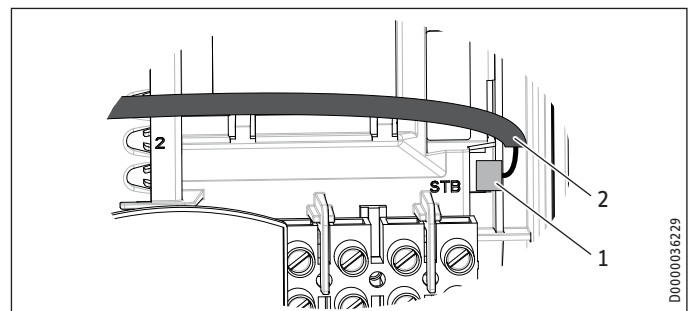
8.1 Control cable

- Use a telephone cable as control cable (without metal screen); see chapter "Specification".
- The control cable can optionally be routed into the instantaneous water heater through the free cable grommet.



- Prepare the control cable for the adaptor assembly. Determine the required cable length for the selected cable grommet.
- When using the lower cable grommet, route the control cable to the adaptor assembly along the heater element.

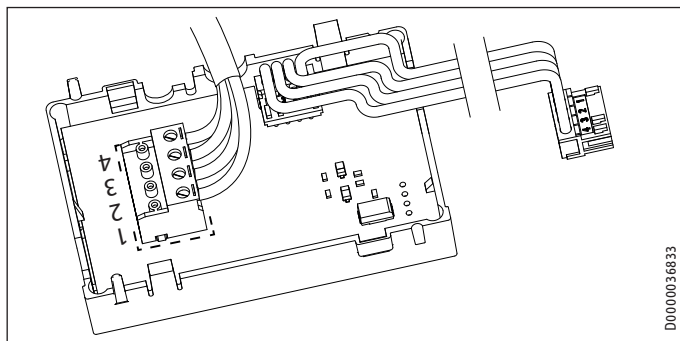
8.2 Converting the instantaneous water heater



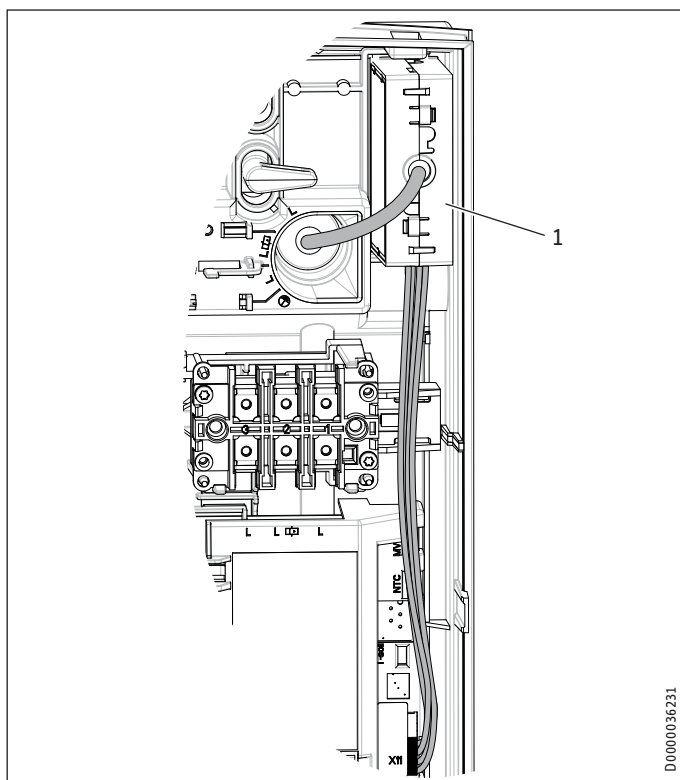
- 1 High limit safety cut-out slot
- 2 Sleeve

- Undo the plug on the high limit safety cut-out at the PCB of the instantaneous water heater.
- Widen the insulating hose and fully place the switching wires from the high limit safety cut-out into the insulating hose.
- Fit the plug of the high limit safety cut-out onto the instantaneous water heater slot.

8.3 Fitting the adaptor assembly



- Open the adaptor assembly casing by pushing in both lateral snap hooks.
- Connect the control cable to the terminal. Ensure the correct wires are connected to the adaptor assembly terminal and the programming unit.
- Guide the control cable through the cable entry. Ensure the terminal is seated correctly on the PCB (terminal inside the marked frame).
- Close the casing.



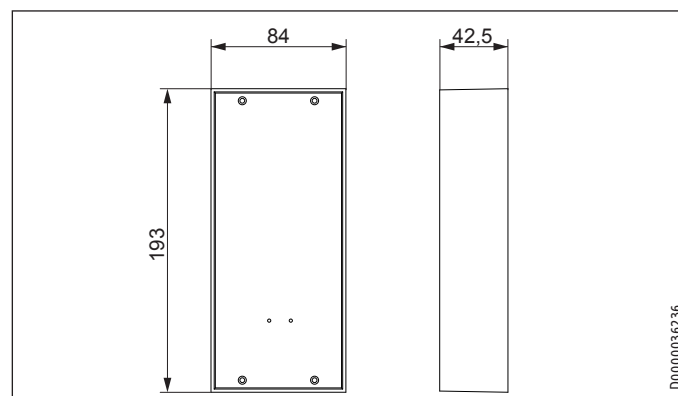
1 Adaptor assembly

- Fit the plug of the adaptor assembly onto the instantaneous water heater slot X11.
- Mount the adaptor assembly into the top of the instantaneous water heater.
- Fit the appliance cover to the instantaneous water heater.

8.4 Installation site

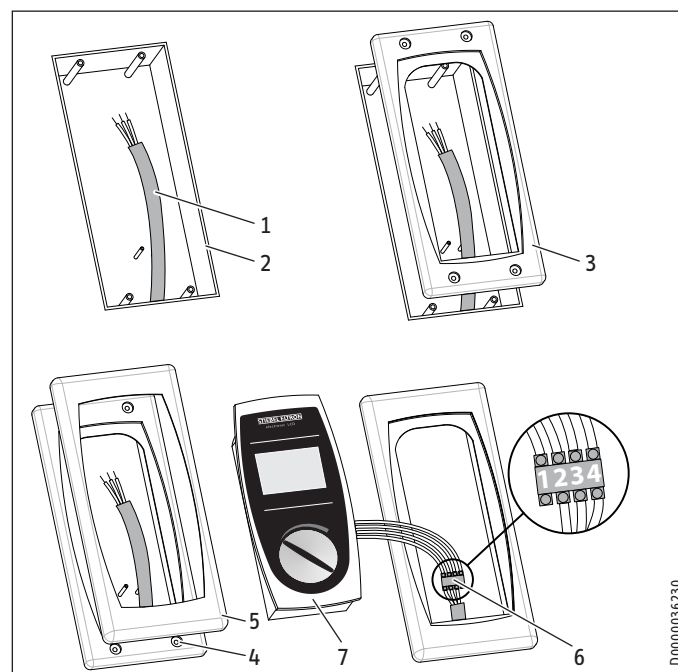
- Mount the hardwired remote control vertically on the flush box. As an alternative, the device may also be mounted over a wall recess. For the maximum distance to the instantaneous water heater, see chapter "Specification".

8.5 Mounting the flush box



- Position the flush box base (see chapter "Essential accessories") flush against the wall and route the telephone cable into the flush box. Level the flush box horizontally.
- Prepare the telephone cable:
Remove 35 mm of sheath insulation and strip 6 mm of the cable ends.

8.6 Mounting the programming unit



- Control cable
- Flush box
- Frame
- Screws as delivered
- Fascia
- Socket terminal
- Programming unit

INSTALLATION

Commissioning

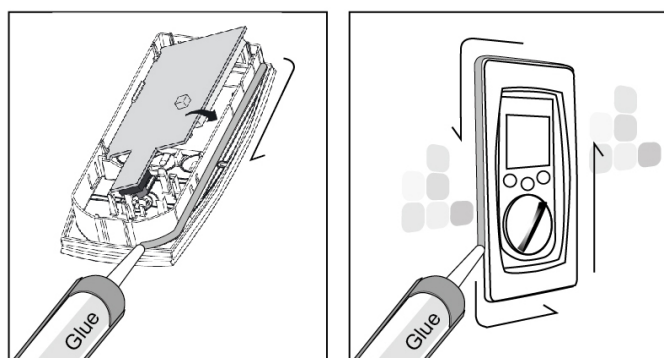
- Fit the components; see diagram. Ensure the correct wires are connected to the programming unit terminal and the adaptor assembly.
- Click the fascia and programming unit into place.

Alternative mounting of the hardwired remote control

As an alternative you can also mount the hardwired remote control onto a wall without the flush box.

Size of recess in the wall: 145 x 62 mm

- Fit the components without the flush box, see chapter "Mounting the programming unit".



- In case of uneven surface, or installation of the wired control box is inside the shower room. The outer case should be glued together with the inner case. Finally, put the wired control panel inside.

9. Commissioning



WARNING Electrocutation

Commissioning may only be carried out by a qualified contractor in accordance with safety regulations and the instructions supplied with the instantaneous water heater.

9.1 Appliance handover

- Explain the functions of the appliance to the user. Show the user how to operate the appliance.
- Make the user aware of potential dangers, especially the risk of scalding.
- Hand over these instructions as well as the instructions for any accessories being used.

10. Shutting down

- Isolate the instantaneous water heater from the power supply.

11. Recommissioning

See chapter "Commissioning" in the instantaneous water heater instructions.

12. Troubleshooting

Problem	Cause	Remedy
Programming unit without temperature indication.	The connecting cable is not plugged in.	Reconnect the cable.
	The connecting cable is faulty.	Check and replace the connecting cable, if required.
The temperature cannot be adjusted.	The programming unit is faulty.	Check and replace the programming unit, if required.
The instantaneous water heater is not responding to temperature adjustments.	The cable connection to the instantaneous water heater is faulty.	Check and replace the cable connection, if required.

13. Maintenance

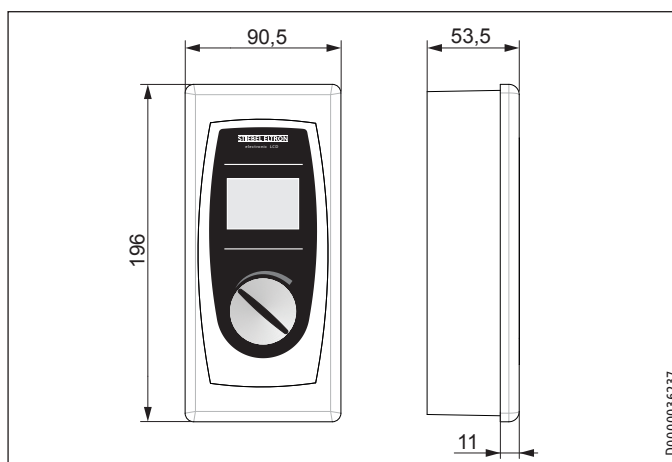


DANGER Electrocutation

Before any work on the appliance, disconnect all poles from the power supply.

14. Specification

14.1 Dimensions and connections



14.2 Data table

		FB 1 LCD		
		233237		
Low voltage	V	5		
Control cable, telephone line	Type	J-YY 2x2x0.6		
Control cable length, max.	m	15		
Type of installation		Unfinished walls		
Casing material		PS		
Colour		White		
Temperature setting range	°C	30 - 60		
Height/width/depth	mm	196	90.5	53.5
Weight (excl. flush box)	kg	0.250		

Warranty

The warranty conditions of our German companies do not apply to appliances acquired outside of Germany. In countries where our subsidiaries sell our products, it is increasingly the case that warranties can only be issued by those subsidiaries. Such warranties are only granted if the subsidiary has issued its own terms of warranty. No other warranty will be granted.

We shall not provide any warranty for appliances acquired in countries where we have no subsidiary to sell our products. This will not affect warranties issued by any importers.

Environment and recycling

We would ask you to help protect the environment. After use, dispose of the various materials in accordance with national regulations.

Deutschland

STIEBEL ELTRON GmbH & Co. KG
Dr.-Stiebel-Straße 33 | 37603 Holzminden
Tel. 05531 702-0 | Fax 05531 702-480
info@stiebel-eltron.de
www.stiebel-eltron.de

Verkauf

Tel. 05531 702-110 | Fax 05531 702-95108 | info-center@stiebel-eltron.de

Kundendienst

Tel. 05531 702-111 | Fax 05531 702-95890 | kundendienst@stiebel-eltron.de

Ersatzteilverkauf

Tel. 05531 702-120 | Fax 05531 702-95335 | ersatzteile@stiebel-eltron.de

Australia

STIEBEL ELTRON Australia Pty. Ltd.
4/8 Rocklea Drive | Port Melbourne VIC 3207
Tel. 03 9645-1833 | Fax 03 9645-4366
info@stiebel.com.au
www.stiebel.com.au

Austria

STIEBEL ELTRON Ges.m.b.H.
Eferdinger Str. 73 | 4600 Wels
Tel. 07242 47367-0 | Fax 07242 47367-42
info@stiebel-eltron.at
www.stiebel-eltron.at

Belgium

STIEBEL ELTRON bvba/sprl
't Hofveld 6 - D1 | 1702 Groot-Bijgaarden
Tel. 02 42322-22 | Fax 02 42322-12
info@stiebel-eltron.be
www.stiebel-eltron.be

Czech Republic

STIEBEL ELTRON spol. s r.o.
K Hájem 946 | 155 00 Praha 5 - Stodůlky
Tel. 251116-111 | Fax 235512-122
info@stiebel-eltron.cz
www.stiebel-eltron.cz

Denmark

Pettinaroli A/S
Mandal Allé 21 | 5500 Middelfart
Tel. 06341 666-6 | Fax 06341 666-0
info@stiebel-eltron.dk
www.stiebel-eltron.dk

Finland

STIEBEL ELTRON OY
Kapinakuja 1 | 04600 Mäntsälä
Tel. 020 720-9988
info@stiebel-eltron.fi
www.stiebel-eltron.fi

France

STIEBEL ELTRON SAS
7-9, rue des Selliers
B.P. 85107 | 57073 Metz-Cédex 3
Tel. 0387 7438-88 | Fax 0387 7468-26
info@stiebel-eltron.fr
www.stiebel-eltron.fr

Hungary

STIEBEL ELTRON Kft.
Gyár u. 2 | 2040 Budaörs
Tel. 01 250-6055 | Fax 01 368-8097
info@stiebel-eltron.hu
www.stiebel-eltron.hu

Japan

NIHON STIEBEL Co. Ltd.
Kowa Kawasaki Nishiguchi Building 8F
66-2 Horikawa-Cho
Saiwai-Ku | 212-0013 Kawasaki
Tel. 044 540-3200 | Fax 044 540-3210
info@nihonstiebel.co.jp
www.nihonstiebel.co.jp

Netherlands

STIEBEL ELTRON Nederland B.V.
Daviottenweg 36
5222 BH 's-Hertogenbosch
Tel. 073 623-0000 | Fax 073 623-1141
info@stiebel-eltron.nl
www.stiebel-eltron.nl

Poland

STIEBEL ELTRON Polska Sp. z o.o.
ul. Działkowa 2 | 02-234 Warszawa
Tel. 022 60920-30 | Fax 022 60920-29
stiebel@stiebel-eltron.pl
www.stiebel-eltron.pl

Russia

STIEBEL ELTRON LLC RUSSIA
Urzhumskaya street 4,
building 2 | 129343 Moscow
Tel. 0495 7753889 | Fax 0495 7753887
info@stiebel-eltron.ru
www.stiebel-eltron.ru

Slovakia

TATRAMAT - ohrievače vody, s.r.o.
Hlavná 1 | 058 01 Poprad
Tel. 052 7127-125 | Fax 052 7127-148
info@stiebel-eltron.sk
www.stiebel-eltron.sk

Switzerland

STIEBEL ELTRON AG
Industrie West
Gass 8 | 5242 Lupfig
Tel. 056 4640-500 | Fax 056 4640-501
info@stiebel-eltron.ch
www.stiebel-eltron.ch

Thailand

STIEBEL ELTRON Asia Ltd.
469 Moo 2 Tambol Klong-Jik
Amphur Bangpa-In | 13160 Ayutthaya
Tel. 035 220088 | Fax 035 221188
info@stiebel-eltronasia.com
www.stiebel-eltronasia.com

United Kingdom and Ireland

STIEBEL ELTRON UK Ltd.
Unit 12 Stadium Court
Stadium Road | CH62 3RP Bromborough
Tel. 0151 346-2300 | Fax 0151 334-2913
info@stiebel-eltron.co.uk
www.stiebel-eltron.co.uk

United States of America

STIEBEL ELTRON, Inc.
17 West Street | 01088 West Hatfield MA
Tel. 0413 247-3380 | Fax 0413 247-3369
info@stiebel-eltron-usa.com
www.stiebel-eltron-usa.com

STIEBEL ELTRON



Irrtum und technische Änderungen vorbehalten! | Subject to errors and technical changes! | Sous réserve d'erreurs et de modifications techniques! | Onder voorbehoud van vergissingen en technische wijzigingen! | Salvo error o modificación técnica! | Excepto erro ou alteração técnica | Zastrzeżone zmiany techniczne i ewentualne błędy! | Omyly a technické změny jsou vyhrazeny! | A muszaki változtatások és tévedések jogát fenntartjuk! | Отсутствие ошибок не гарантируется. Возможны технические изменения. | Chyby a technické zmeny sú vyhradené!

Stand 8845

A 305111-37538-8852
B 312123-37538-8852