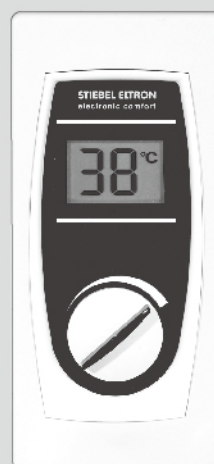


OPERATION AND INSTALLATION

Hardwired remote control for instantaneous water heaters DEL SLi, DHE SLi

>> FB SLC



DEL SLi

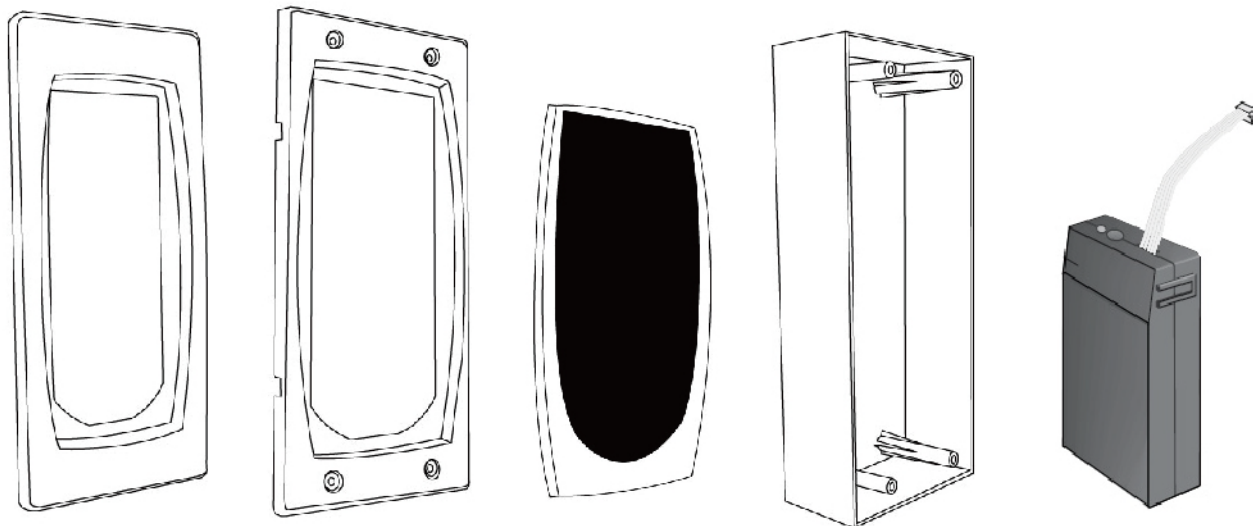


DHE SLi

斯 寶 亞 創
STIEBEL ELTRON
SINCE 1924 · GERMANY

1. This product includes 本產品包括:

A



1. Outer Frame
外框

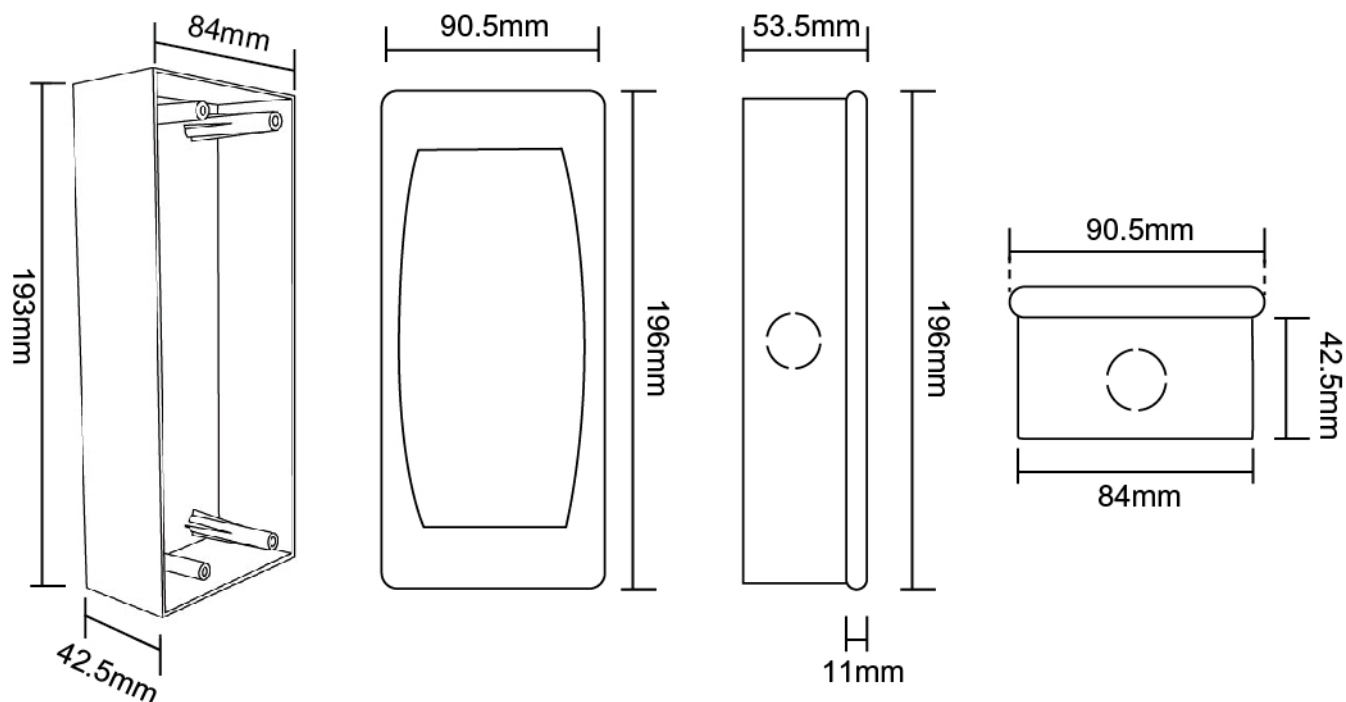
2. Inner Frame
內框

3. Control Cover
主機蓋

4. Junction Box
接線盒

5. Connecting module
傳訊盒

Dimensions 尺寸



2. Before installation 安裝前的準備和注意

a. The FB SLC connection module must be fitted and initially started up by a qualified installer, following these instructions.

必須由合資格的電氣技工進行以下的安裝和測試程序，以免發生危險。

b. All electrical connections and installation work will be carried out in accordance with the provisions of the electrical associations concerned and the appropriate national and regional regulations.

所有安裝和測試必須遵照所屬地區的電力法例進行安裝和測試。

c. An installed unit will be switched off before retrofitting with a remote control.

在安裝期間必須關閉所有連接至電熱水爐的電源。

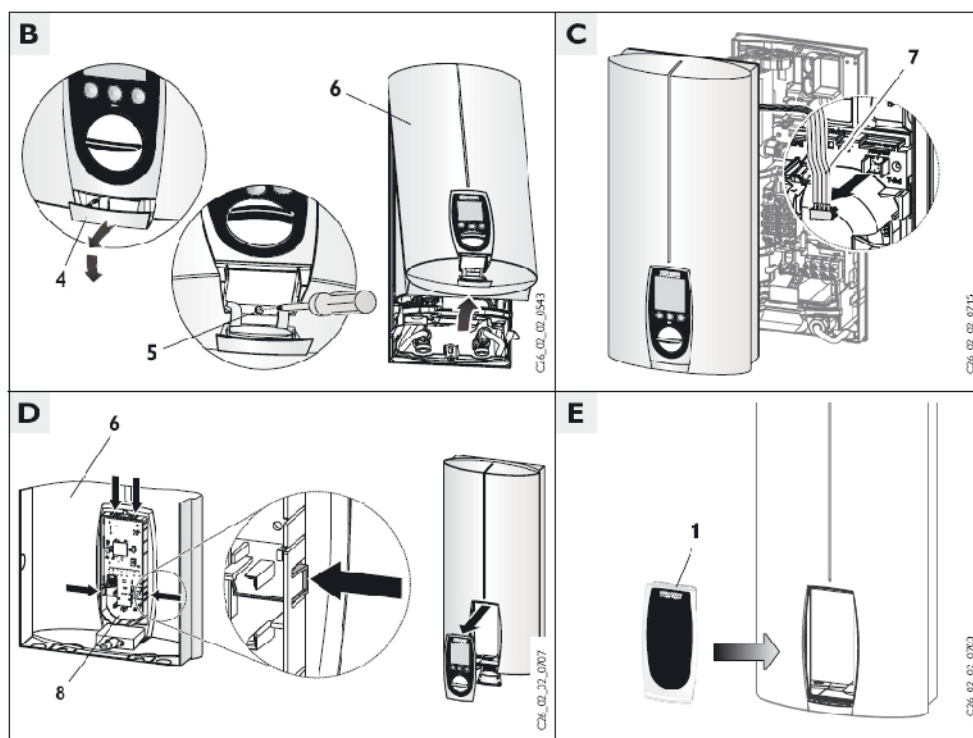
d. The cable seals supplied with the unit will be fitted as protection against penetrating water.

所有安裝的導管和接線必須能夠防水。

e. The remote control operations on safety extra low voltage. Connections up to 15m in length are ensured for easy communication. Control line: Tele line type J-YY 2x2x0.6. The control line can be laid permanently concealed or surface-mounted.

在安裝本產品的位置，必須與主機的安裝位置，有特低壓線的導管或線管連接著，而連接線的長度不得超越15米，使用的訊號線規格最低為電話線規格 J-YY 2x2x0.6.

3. Installation 安裝和接線



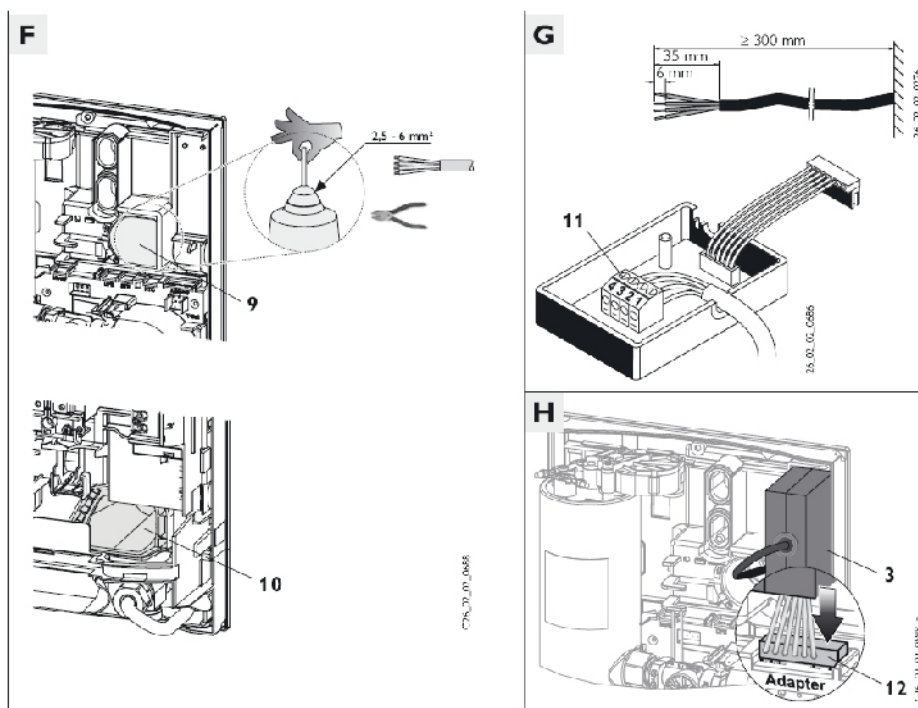
a. Heater side: - “B” open the cover on the heater, loosen the retaining screw.

Remove the cover.

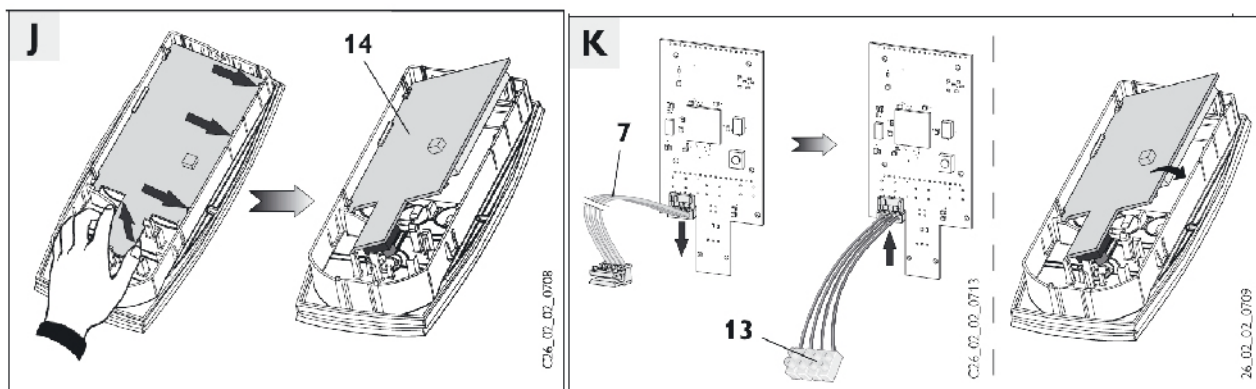
- “C” pulls the plug for the thermostat fly lead cable from the heater.
- “D” removes the control unit from the heater.
- “E” presses the Control cover into the cover, lodging on all 4 engagement hooks.

在熱水爐

- 如圖 “B”，用螺刀旋開爐底部螺絲，並把爐蓋打開。
- 如圖 “C”，把控制器接線拔出。
- 如圖 “D”，把控制器拆卸下。
- 如圖 “E”，把3.主機蓋緊緊套在面殼上。



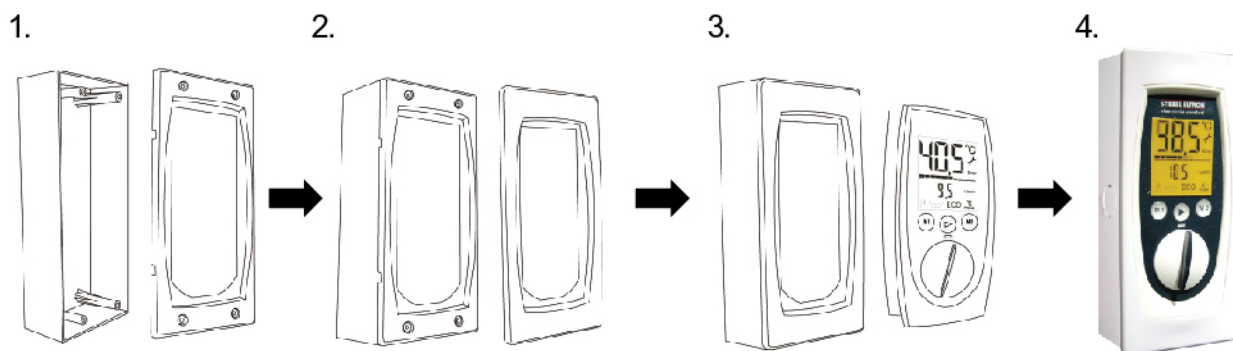
- “F” Feed the connection cable through the top or bottom cable grommet. When connecting through the upper cable grommet, it must be cut back at the level in line with the cable cross section. When connecting through the bottom cable grommet, the cable must be laid in the unit beneath the cable holders on the copper tank.
- “G” Strip the connection cable, open the connection module housing by pressing in two of the catches on the side. Connect the connection cable to the terminal strip, place in the cable bushing and recluse the housing.
- “H” Insert the plug into the “adapter” point and place the connection module against the unit back wall top right.
- 如圖 “F”，把訊號連接線經過頂部或底部的接線通道引入，注意其它電源線。
- 如圖 “G”，打開傳訊盒，把連接線在接上，並紀錄接線次序，把盒蓋上。
- 如圖 “H”，把傳訊盒固定在爐內右上方的位置，並如圖指示，正確地把線插在靠右方插接於爐上。



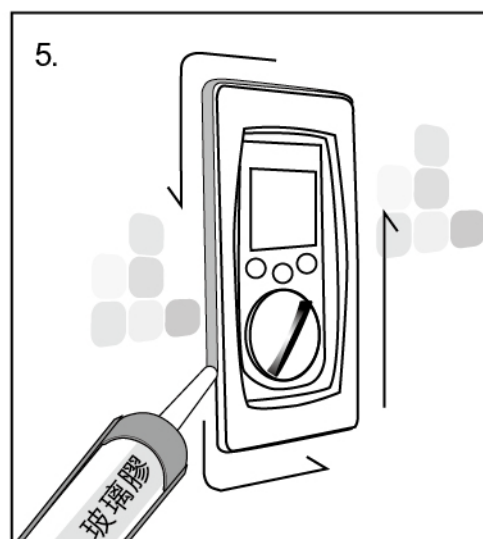
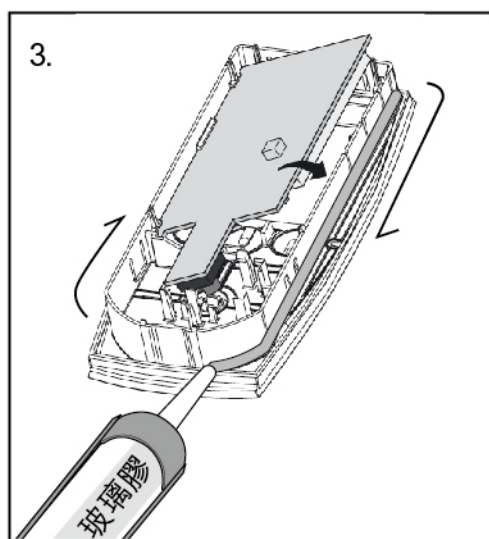
- b. Remote control : - “J” loosen the motherboard from the control unit. Do so by pulling the board upwards with the thumbs at the bottom connector; loosening the three right hand engagement hooks one after the other at the same time.
- “K” replaces the thermostat fly lead cable on the motherboard with the terminal strip component from the wall mount. Reinsert the motherboard in the control unit.
 - Concealed the Junction box into the wall or cabinet,
 - Cover the junction box by screwing the Inner frame and then by the Outer frame. All 4 engagement hooks must nest.
 - Fasten the connection cable to the terminal strip component, noting the sequence of the terminal rows (1,2,3,4) in the connecting module.

在遙控器：

- “J” 把控制器線路板鬆掉。
- “K” 鬆掉連接線，並把接線盒上提供的線插換上，把控制器線路板裝回。
- 把接線盒藏於木板後或牢固的牆中
- 先用螺絲把內框固定於接線盒上，再把外框緊扣於內框的的四個倒扣位，確保牢固。
- 依次序(1,2,3,4)把連接線接穩。
- 把控制器緊扣於外框上。



Attention: If the installation had not involved the junction box(4), the inner frame(2) should be tighten by screw on the opening of the wooden board or wall. Then, covered the outer frame(1).
 注意：如不使用底部接線盒(4)進行接駁，請把內框(2)用螺絲收妥於預先開孔的木板或牆身表面，再安上外框(1)。



(3)(5) In case of uneven surface, or installation of the wired control box is inside the shower room. The outer case should be glued together with the inner case. Finally, put the wired control panel inside.

(3)(5) 如因安裝的表面不平，而導致外框容易脫離，或接線盒安裝於淋浴房內，必需在內外框之間加上適當玻璃膠把它們牢固起來，最後才把控制器於接線後蓋上。

4. First Start-up 第一次使用

Caution: For starting up the instantaneous water heater DEL..SLi, DHE..SLi with the remote control FB SLC, please note the Instantaneous water Heater Operation and Installation Instructions: -Completion of installation.

注意：在第一次使用本產品配合即熱式電熱水爐DEL..SLi 及 DHE..SLi 時，請參閱和依照有關隨電熱水爐附上的安裝及使用說明書中，提及有關安裝完成事項和第一次使用事項欄節之說明。